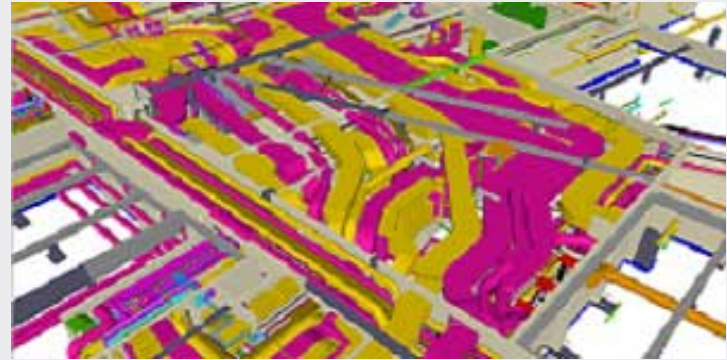


Solibri Rules Based Workshop

Course Description

Designed for anyone that wants to use Solibri model Checker for Quality Assurance and BIM model validation.

You will learn how to use the advanced features of the tool to create model checking rules, as well as getting a thorough understanding of how to do advanced information take-off and checking for correct component classifications



Prerequisites

A good working knowledge of 3D design is desirable, preferably using Revit software. You should also have undertaken the Solibri Fundamentals course.

BIM Coordination



Topics Include

- ❑ Introduction and Principles of BIM
- ❑ Introduction to Rules Based Checking
- ❑ Component Classification
- ❑ Advanced Information Take Off
- ❑ Advanced Rule Checking
- ❑ The Ruleset Manager
- ❑ Creating and Updating Rules
- ❑ Processing Models
- ❑ Using Hyperlinks
- ❑ Creating your rules Workshop

Course Duration: 2 Days

Next Step: A Bespoke Course