



ATI FirePro™ V9800

Professional Graphics



Command Your Creations



- **ATI Eyefinity technology that supports up to six independent displays**
- **Industry's most powerful workstation graphics card with 1600 stream processors⁴**
- **Double the computing capability over prior generation**
- **4GB GDDR5 memory**
- **AutoDetect technology instinctively optimizes performance for multi-application workflow**
- **Hardware acceleration of DirectX® 11 and OpenGL® 4.0 advanced features**
- **OpenCL™ 1.0 support⁵**
- **3D Stereoscopic support⁶**
- **Framelock/Genlock support⁷**
- **ATI CrossFire™ Pro Support⁸**
- **Optimized and certified for many major CAD and DCC applications**
- **PCI Express® 2.1 compliant**
- **Extreme performance and ultimate immersive visualization for the high-end market**

The ATI FirePro™ V9800 professional graphics card from AMD is an ultra high-end workstation solution for professionals who require the ultimate in computational power and performance. This workstation solution features ATI Eyefinity technology, enabling the use of up to six simultaneous and independent display outputs.¹ The ATI FirePro V9800 has 4GB of high speed GDDR5 memory and more than double the computational power of previous-generation products.² With its large frame buffer and a full 30-bit display pipeline,³ the ATI FirePro V9800 is ideally suited for professionals who require the ultimate computational power and performance for high-quality, multi-display visualization of large and complex datasets.

Innovation and Reliability from a Technology Leader



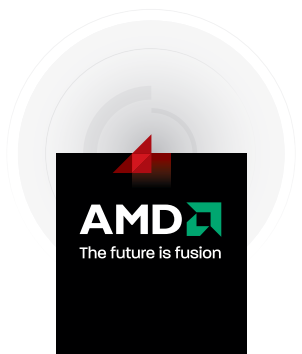
Based on the latest award-winning GPU technology from AMD, with 1600 stream processors, the ATI FirePro V9800 ultra parallel processing architecture helps maximize throughput by automatically directing graphics horsepower where it's needed. Intelligent management of computational resources enables enhanced utilization of the GPU to enable real-time rendering of extremely complex models and scenes.

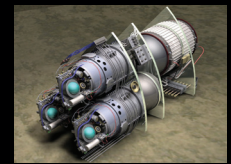
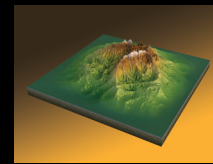
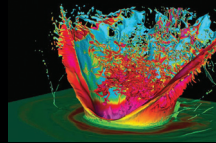
The ATI FirePro V9800 features six mini DisplayPort outputs driven by ATI Eyefinity technology, offering an unprecedented multitude of display configurations including operating multiple displays independently or creating one massive display surface spanning multiple monitors. Professional users can look forward to the increase in productivity enabled via a multi-monitor workstation.

In addition, ATI FirePro products incorporate a unique AutoDetect technology. As users open new 3D applications, or move between them, ATI FirePro graphics driver settings are automatically configured for optimized performance of supported applications, no matter what the user's workflow demands.

ATI FirePro professional graphics cards are thoroughly tested and certified with many major Computer Aided Design (CAD) and Digital Content Creation (DCC) applications, ensuring a level of reliability and compatibility not typically found in consumer graphics products.

ATI FirePro professional graphics cards have been engineered to deliver innovation and reliability for a wide range of professional operating environments, including Microsoft® Windows® 7, Windows® XP, Windows Vista® and Linux.® The unified driver, which supports all ATI FirePro products, helps reduce the total cost of ownership by simplifying installation, deployment and maintenance.





ATI FirePro™ V9800

Professional Graphics

Features	Benefits
ATI Eyefinity Technology	Advanced multi-display technology delivering highly immersive graphics/computing experience with innovative display capabilities supporting massive desktop workspaces
AutoDetect Technology	As a user moves between applications, or opens new ones, the graphics driver settings are automatically configured for maximum performance
Full 30-bit Display Pipeline	Enables more color values than 24-bit products for more accurate color reproduction and superior visual fidelity
Multi-View Display	With six DisplayPort outputs, Multi-View enables up to six displays with independent display resolution, refresh rate, and display rotation settings
Full Shader Model 5.0 Support	Create more complex geometry and scenes without taxing the CPU
Certification	There is a high level of assurance when purchasing a configuration that is reliable and provides the performance necessary for professional 3D graphics needs
DirectX® 11 and OpenGL® 3.2 Advanced Features	Great performance, scalability and reliability
OpenCL™ 1.0	Industry standard API - Open, multiplatform development platform for enabling broad adoption of heterogeneous computing

¹ ATI Eyefinity technology can support multiple displays using a single enabled ATI FirePro™ professional graphics card. Microsoft® Windows® 7, Windows Vista®, or Linux® is required in order to support more than 2 displays. Native mini DisplayPort™ connectors and/or certified mini DisplayPort™ active or passive adapters to convert your monitor's native input to your graphics card's mini DisplayPort™ connector(s) may be required.

² Based on 1600 stream processors for ATI FirePro™ V9800 vs. 800 stream processors for ATI FirePro™ V8750.

³ Thirty-bit monitor required for full 30-bit display.

⁴ As of 8/1/2010, ATI FirePro™ V9800 has the highest number of stream processors of any graphics card, with 1600 stream processors.

⁵ OpenCL™ compliant driver and SDK release scheduled in 2010.

⁶ Stereoscopic glasses purchased separately.

⁷ Requires ATI FirePro™ S400 synchronization module.

⁸ Specific power, chassis space, connector, and resource requirements may apply. Check with system manufacturer to see if dual cards are supported.

⁹ Linux® drivers can be downloaded from support.amd.com.

¹⁰ Toll free hotline available in North America.



For more information, visit www.amd.com/firepro

Product Specifications	
GPU	
Stream Processors	1600
Memory Interface	256-bit
Memory	
Size/Type	4GB GDDR5
Display Outputs	
Display Ports	6
Max Resolution	2560x1600 @ 60Hz
API/Feature/OS Support	
DirectX®	11.0
OpenGL®	4.0
Shader Model	5.0
ATI Eyefinity Technology Support	Yes
ATI CrossFire™ Pro Support ⁸	Yes
ATI FirePro™ S400 Synchronization Module Support (for Framelock/Genlock)	Yes
Stream Computing	Yes (OpenCL 1.0)
OS Support	Microsoft Windows 7, Windows XP, Windows Vista, Linux 14 (32-bit or 64-bit) ⁹
Thermal/Power/Form Factor	
Max Power	<225 W
Slot(s)	2
Form Factor	Full Height / Full Length
Support Energy Star® 5.0 Compliance	Yes
Bus Interface	PCI Express® 2.0 x16
Additional Details	
System Requirements	<ul style="list-style-type: none"> → 512MB of system memory → CD-ROM drive (or internet access) for software installation → Power supply with one 2x3 and one 2x4 auxiliary power connectors
Retail Package Contents	<ul style="list-style-type: none"> → ATI FirePro V9800 professional graphics card → Installation CD with drivers and documentation → Quick Start Reference Guide → Brochure on adaptors → One ATI CrossFire Pro connection cable → 1 x mini DisplayPort to DL-DVI active adaptor → 5 x mini DisplayPort to SL-DVI active adaptors
ISV Certifications	Many major CAD and DCC applications (visit amd.com/firepro for complete listing)
Warranty and Support	<ul style="list-style-type: none"> → Three year limited product repair/replacement warranty → Direct toll free phone and email access to dedicated workstation technical support team¹⁰ → Advanced parts replacement option